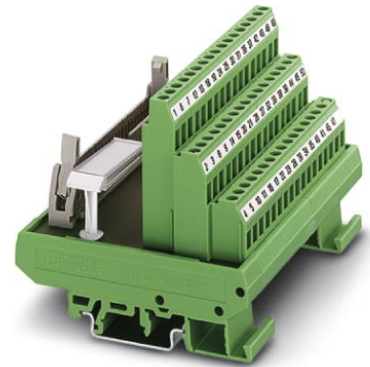


FLKMS 64

Order No.: 2281610

The illustration shows a 50-pos. version

<http://eshop.phoenixcontact.de/phoenix/treeViewClick.do?UID=2281610>

VARIOFACE module, with screw connection and flat-ribbon cable plug connector, for mounting on NS 32 or NS 35/7.5, with pin strip and short and long locking latches for socket strips, 64-pos.

Commercial data	
EAN	4017918054861
Pack	1 Pcs.
Customs tariff	85369010
Weight/Piece	0.3425 KG
Catalog page information	Page 243 (IF-2007)

<http://www.download.phoenixcontact.com>
Please note that the data given here has been taken from the online catalog. For comprehensive information and data, please refer to the user documentation. The General Terms and Conditions of Use apply to Internet downloads.

Technical data	
General data	
Nominal voltage U_N	60 V AC
Max. current carrying capacity per branch	1 A
Number of positions	64
Length	77 mm
Width	124.5 mm
Height	72 mm
Ambient temperature (operation)	-20 °C ... 50 °C
Ambient temperature (storage/transport)	-20 °C ... 70 °C
Test voltage	500 V (50 Hz, 1 min.)

Mounting position	Any
Standards/regulations	IEC 60664
	DIN EN 50178
	IEC 62103

Connection data

Connection 1	PCB connection
Connection in acc. with standard	IEC / EN
Type of connection	Screw connection
Conductor cross section solid min.	0.2 mm ²
Conductor cross section solid max.	4 mm ²
Conductor cross section stranded min.	0.2 mm ²
Conductor cross section stranded max.	2.5 mm ²
Conductor cross section AWG/kcmil min.	24
Conductor cross section AWG/kcmil max	12
Stripping length	8 mm
Screw thread	M 3
Connection 2	Flat-ribbon cable connection
Type of connection	Flat-ribbon cable plug connector in acc. with IEC 60603-13
Number of positions	64

Certificates / Approvals

Approval logo

**requested approbations**

Certification	GOST
---------------	------

Address

PHOENIX CONTACT GmbH & Co. KG
Flachsmarktstr. 8
32825 Blomberg, Germany
Phone +49 5235 3 00
Fax +49 5235 3 41200
<http://www.phoenixcontact.de>



© 2008 Phoenix Contact
Technical modifications reserved;